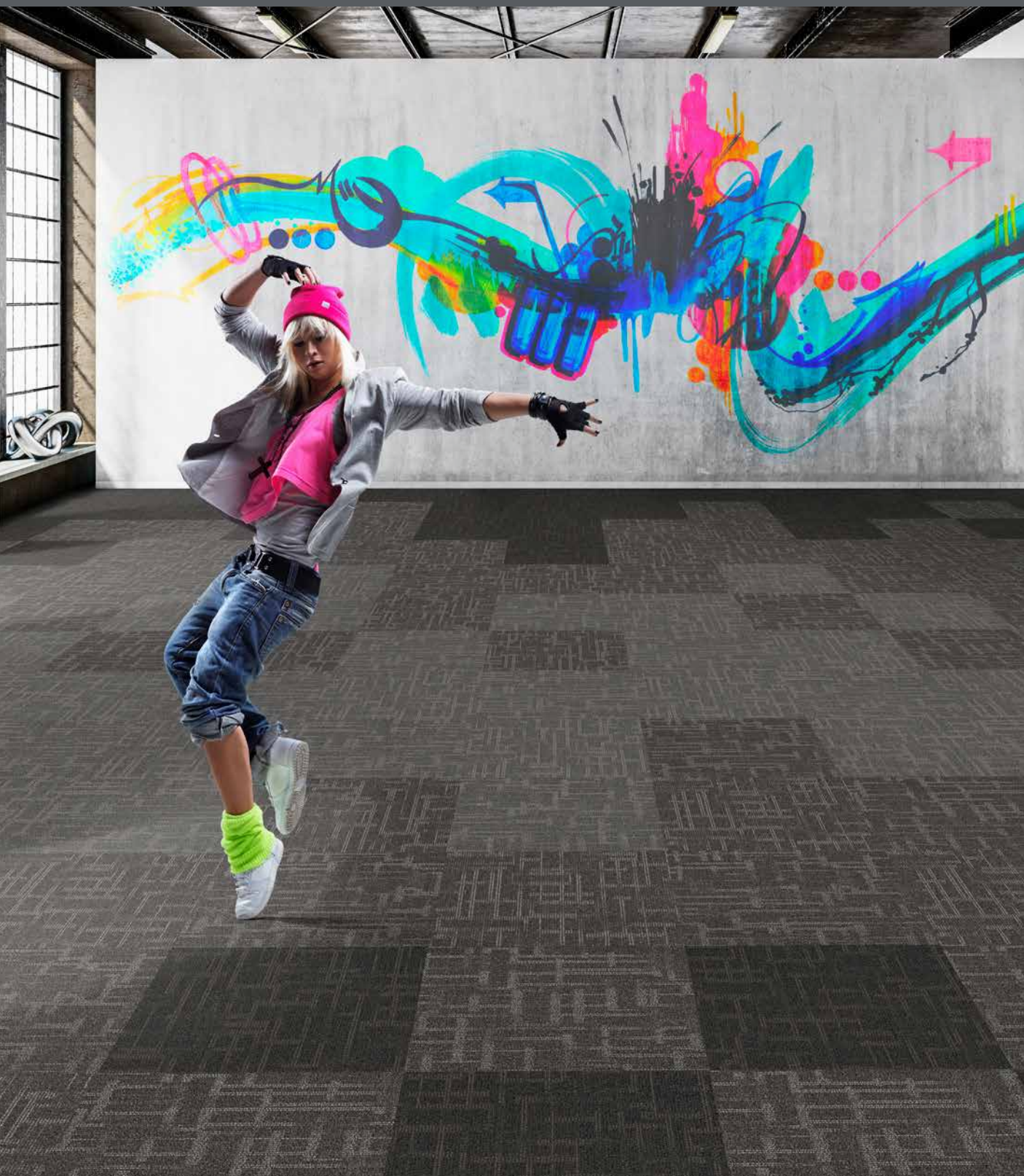


# Streetwise Style



# GRADUS



# Streetwise Style

Streetwise Style is a textured loop pile carpet tile range featuring two designs; Trend and Flair. The range offers a choice of complementary colours that can be used alone or can be combined on the floor to create stylish and contemporary floor schemes. Streetwise Style is suitable for a wide range of environments including commercial office and education.

## Create your design space

### Zoning

Define spaces such as walkways and desk areas by combining different tones to create a gradual transition across the floor from one zone to another.

### Feature Areas

Combine contrasting tones to create a feature with a strong design statement in specific areas such as social spaces and breakout areas.

### Modular Design

Consider the versatility of tile and choose from a range of different installation methods. Mix complementary tones together on the floor to create a unique design.

## Contents

### Colourways

Tiles ..... 1

### Architects Studio

Scheme ..... 2

Floor Plan ..... 4

### Social Hub

Scheme ..... 6

Floor Plan ..... 8

### Commercial Office

Scheme ..... 10

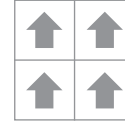
Floor Plan ..... 12

## Streetwise Style Colourways

Specification:	Trend	Flair
Product Dimensions	500mm x 500mm	500mm x 500mm
Product Construction	Tufted Loop Pile	Tufted Loop Pile
Surface Yarn	100% Solution Dyed Nylon	100% Solution Dyed Nylon
Total Carpet Weight	4614 g/m <sup>2</sup>	4334 g/m <sup>2</sup>
Tufted Pile Weight	520 g/m <sup>2</sup>	500 g/m <sup>2</sup>
Primary Backing	Non-woven	Non-woven
Secondary Backing	Bitumen	Bitumen
Total Carpet Thickness	6.3mm	6.1mm
For full specification information visit <a href="http://www.gradus.com">www.gradus.com</a>		

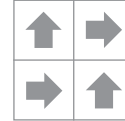


Flair



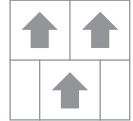
Broadloom

Trend  
Flair



Quarter Turn

Trend  
Flair

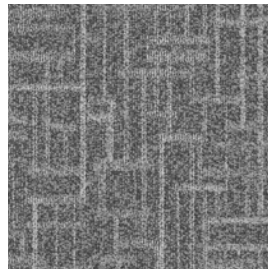


Brick Bond

### Trend



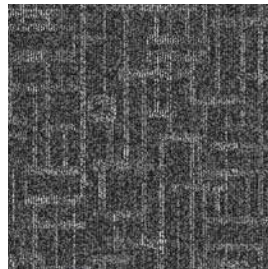
Trend | Tempo 00546  
LRV 11.40



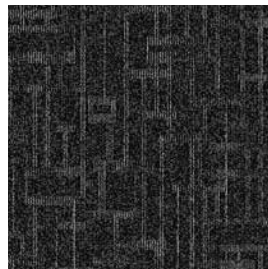
Trend | Focus 00573  
LRV 8.37



Trend | Rhythm 00547  
LRV 5.55



Trend | Cypher 00575  
LRV 6.63



Trend | Canon 00578  
LRV 3.37

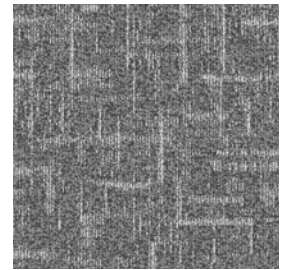
### Flair



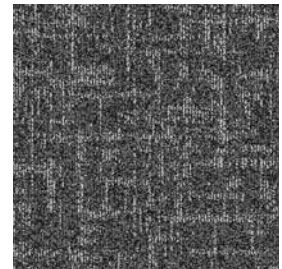
Flair | Tempo 06776  
LRV 12.52



Flair | Rhythm 06778  
LRV 5.56



Flair | Focus 06774  
LRV 8.91



Flair | Cypher 06779  
LRV 6.73

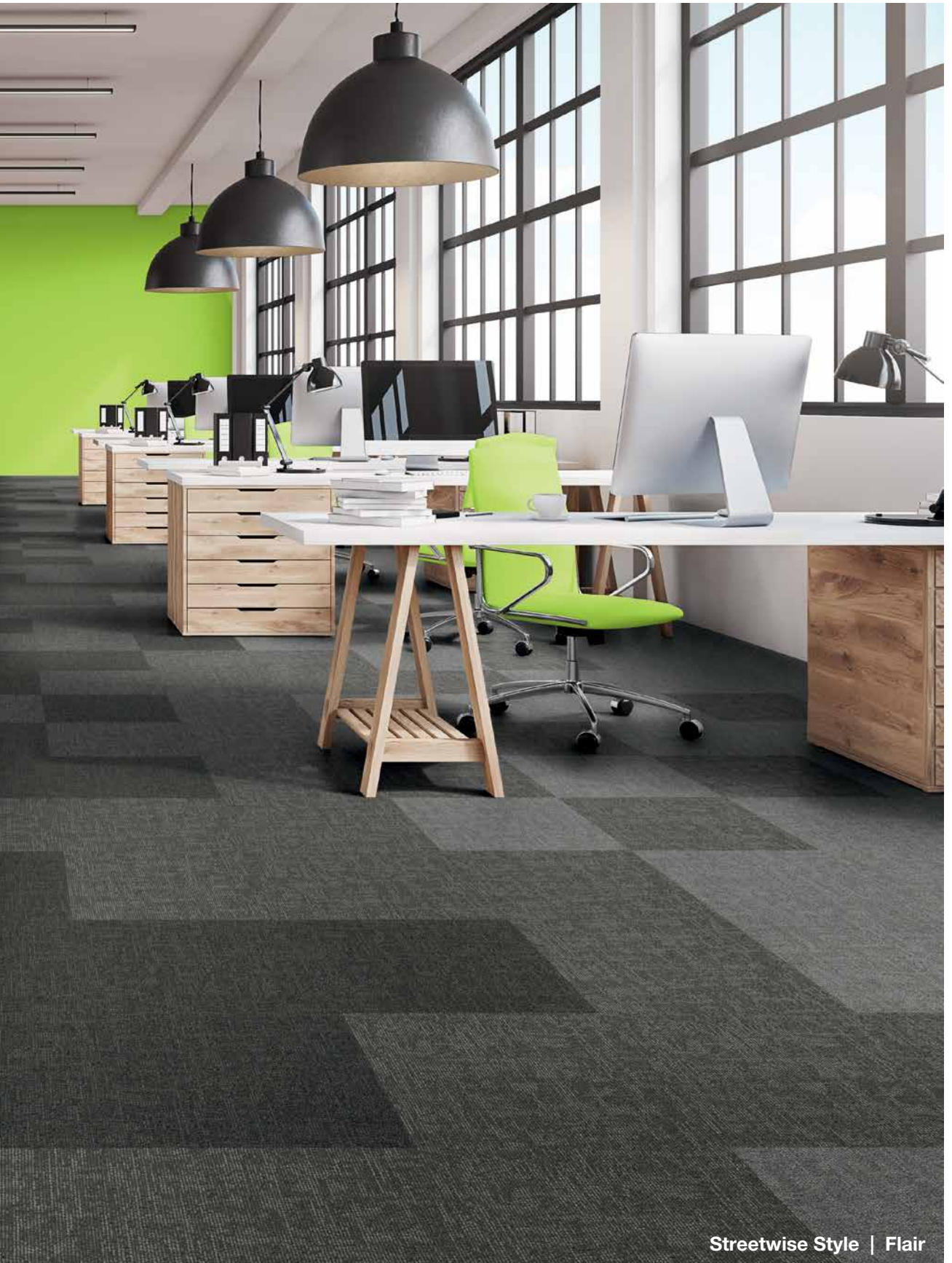


Flair | Canon 06770  
LRV 3.52



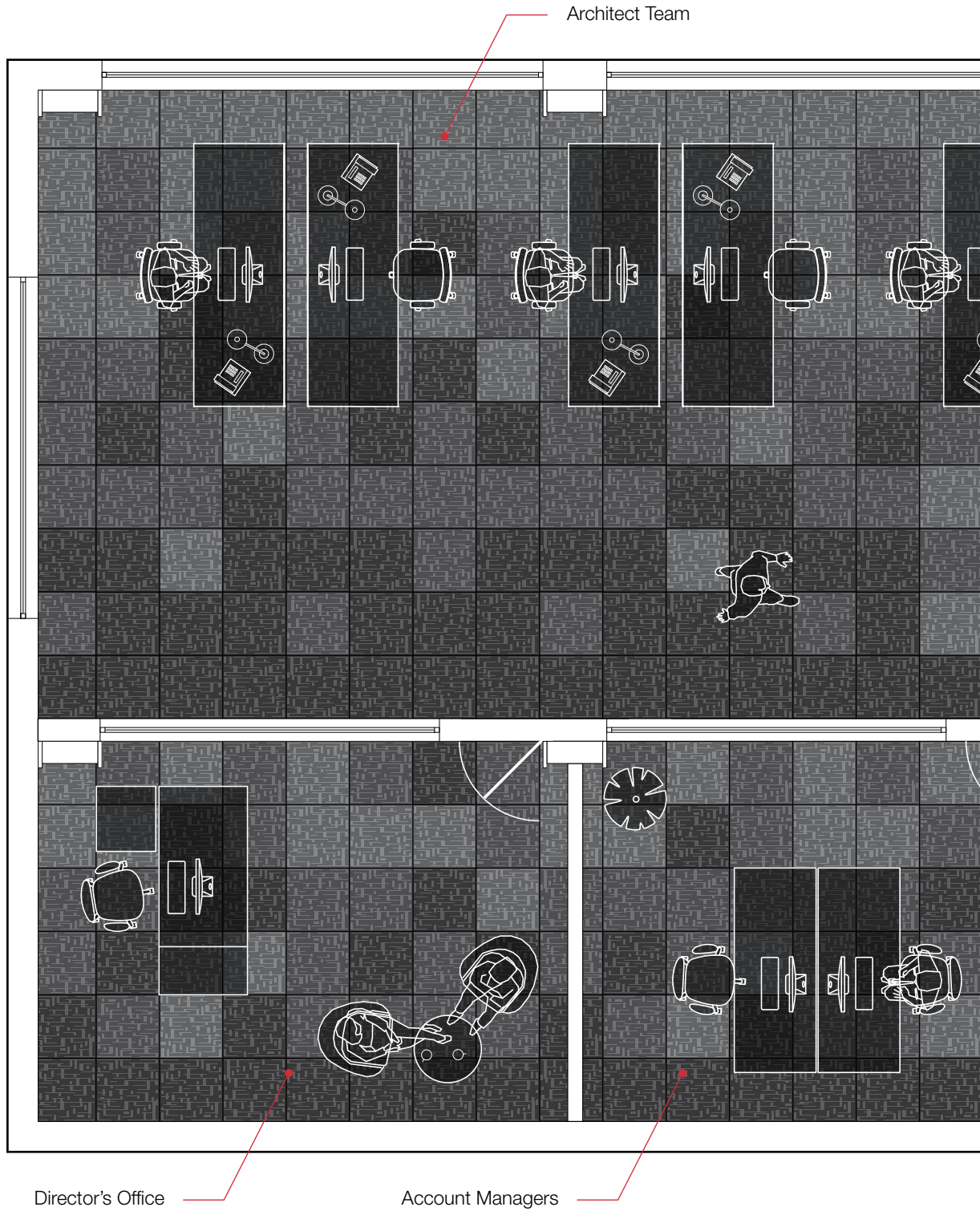
**Zoning**

Define spaces such as walkways and desk areas by combining different tones to create a gradual transition across the floor from one zone to another.



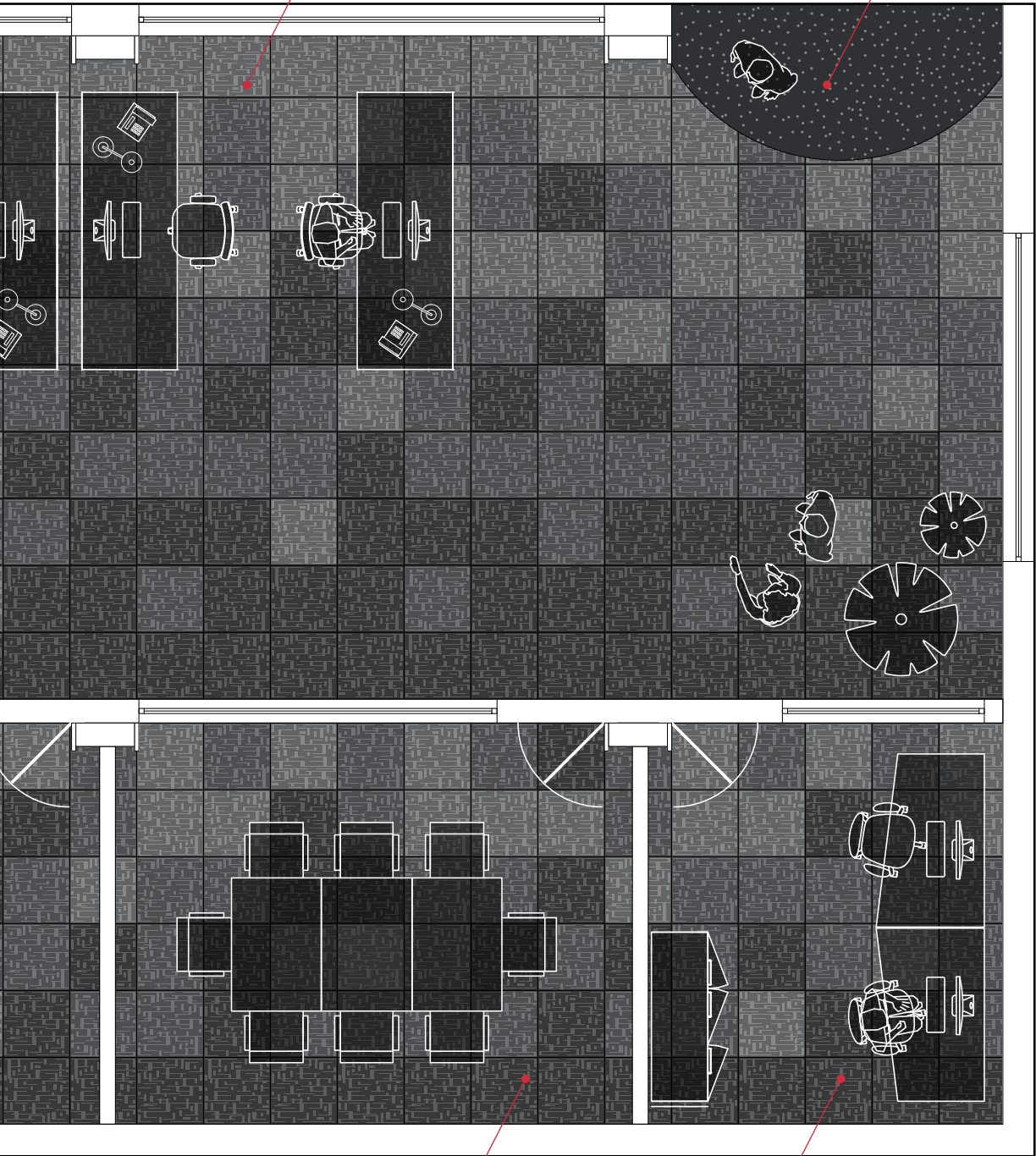
Streetwise Style | Flair

# Architects Studio Floor Plan



3D Visualisation Team

Entrance



Meeting Room

IT Office



Streetwise Style  
Flair | Focus 06774  
(Installed broadloom)



Streetwise Style  
Flair | Cypher 06779  
(Installed broadloom)



Streetwise Style  
Flair | Canon 06770  
(Installed broadloom)



Secondary  
Barrier Matting  
Boulevard 6000

## Social Hub Scheme



### Feature Areas

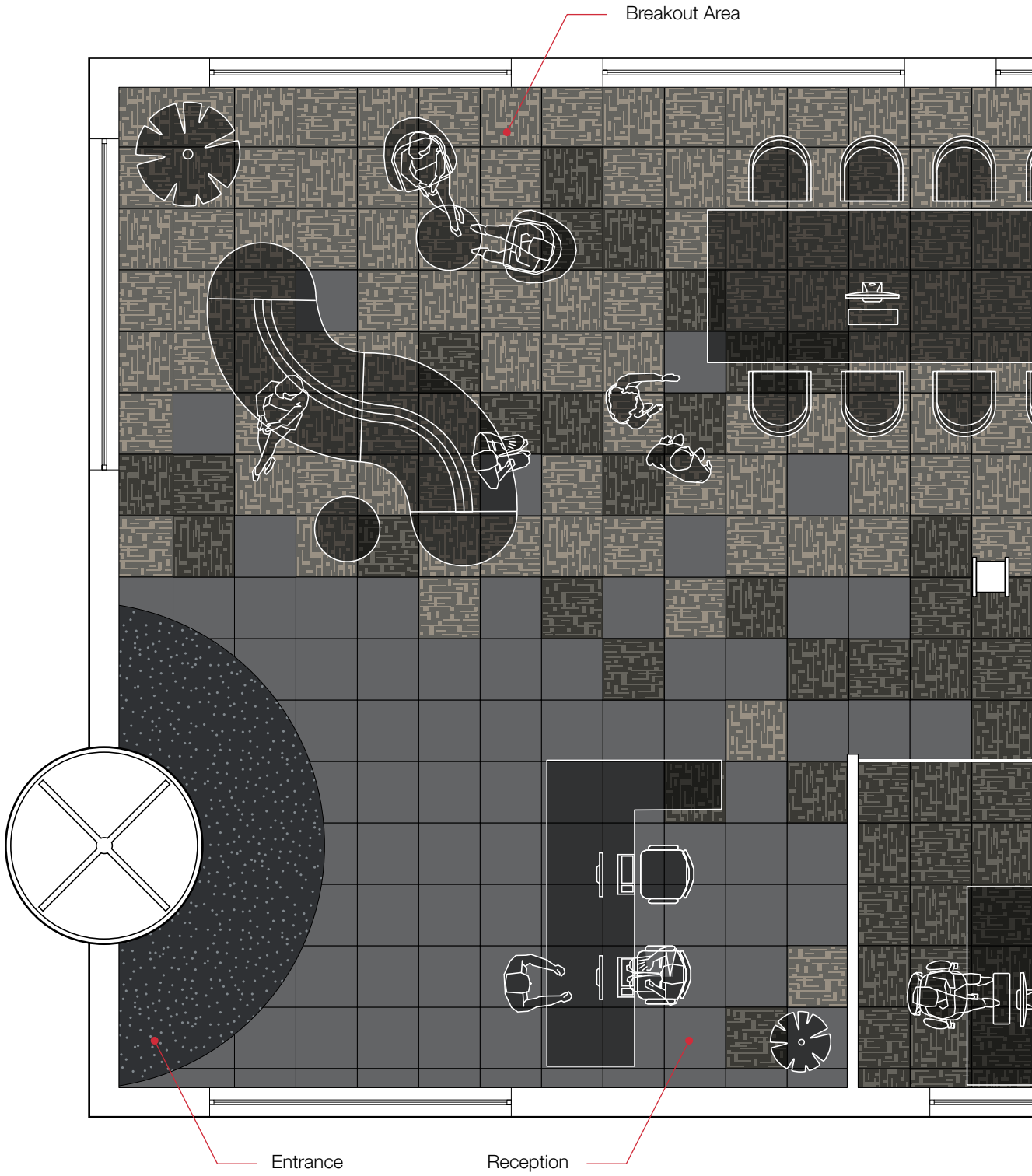
Combine contrasting tones to create a feature with a strong design statement in specific areas such as social spaces and breakout areas.

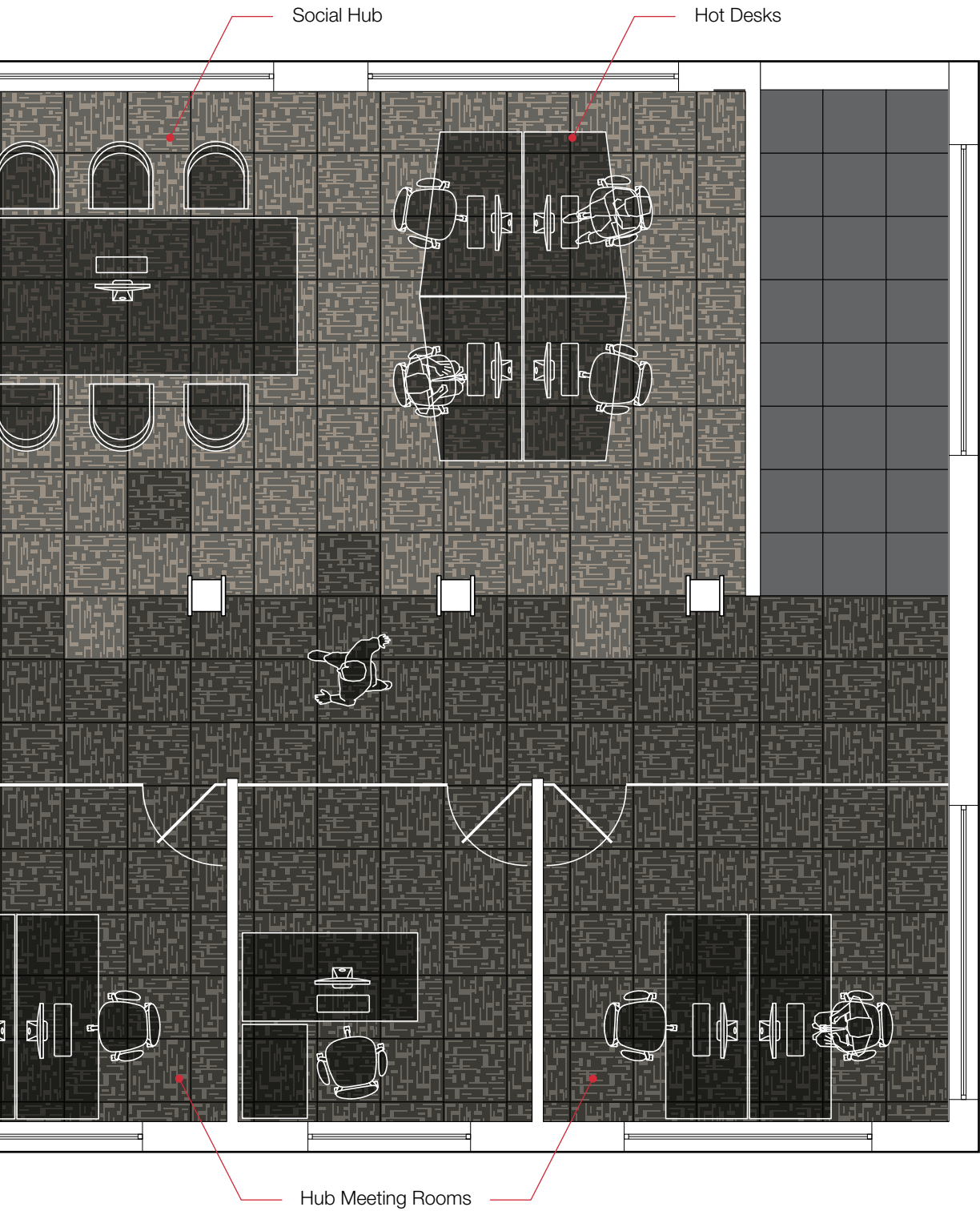




Streetwise Style | Trend

Social Hub Floor Plan






**Streetwise Style**  
 Trend | Tempo 00546  
 (Installed quarter turn)


**Streetwise Style**  
 Trend | Rhythm 00547  
 (Installed quarter turn)


**Loose Lay LVT**  
 Norwegian Stone 0860  
 (Installed quarter turn)


**Secondary Barrier Matting**  
 Boulevard 6000



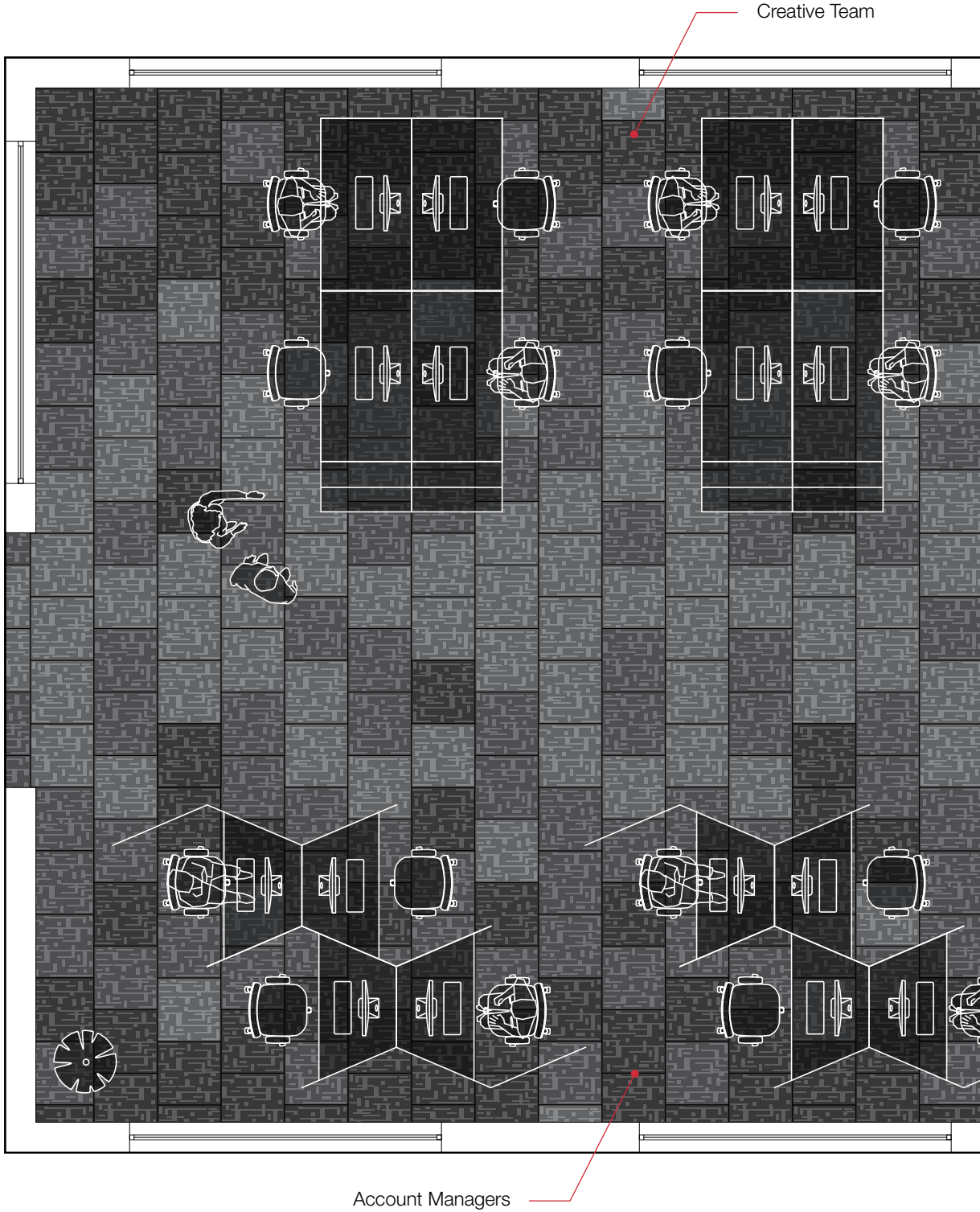
**Modular Design**

Consider the versatility of tile and choose from a range of different installation methods. Mix complementary tones together on the floor to create a unique design.

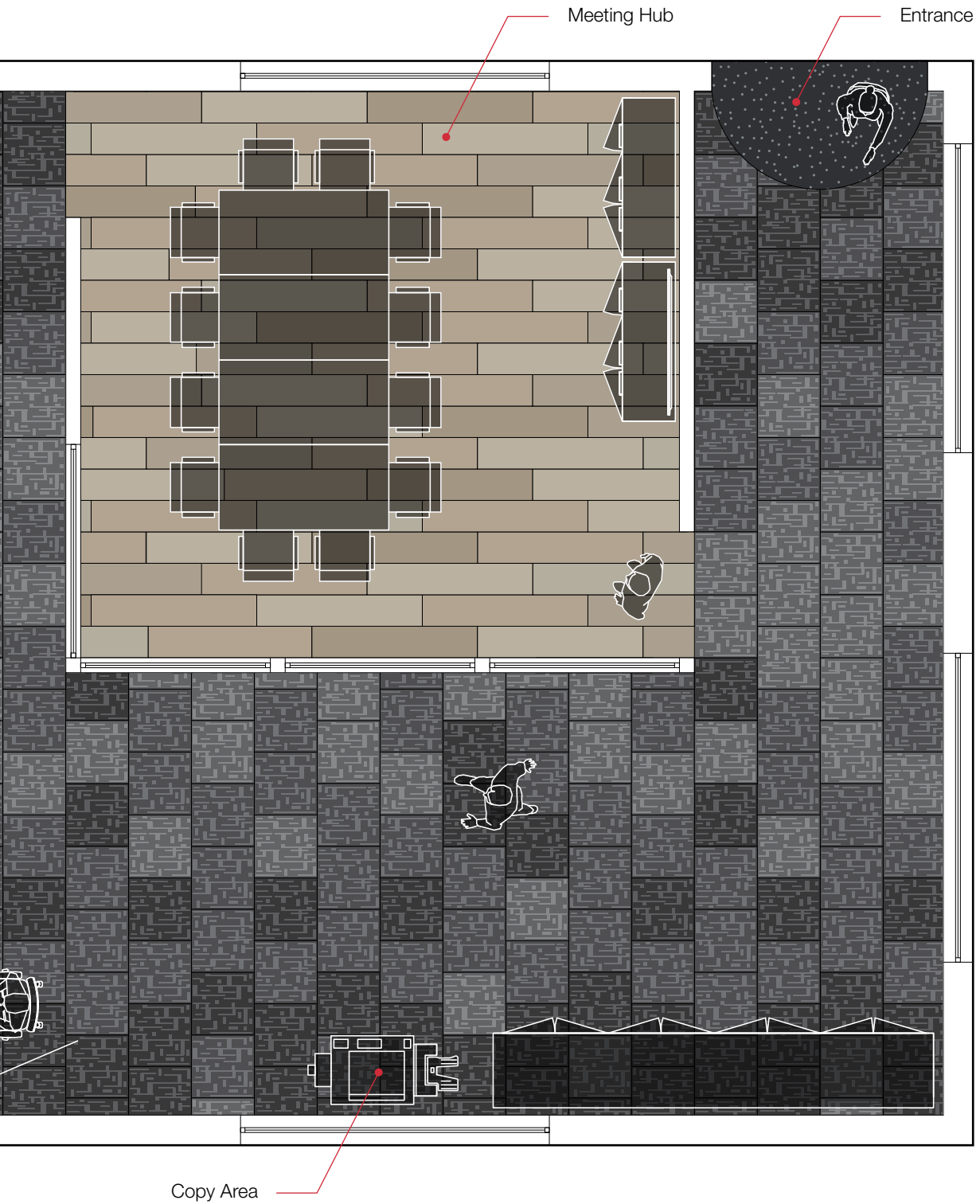


Streetwise Style | Trend

Commercial Office Floor Plan



Loose Lay LVT  
Ranch 0456  
(Installed 1/3)



Meeting Hub

Entrance

Copy Area

Streetwise Style  
Trend | Focus 00573  
(Installed brick bond)

Streetwise Style  
Trend | Cypher 00575  
(Installed brick bond)

Streetwise Style  
Trend | Canon 00578  
(Installed brick bond)

Secondary  
Barrier Matting  
Boulevard 6000



**www.gradus.com**  
**call: 01625 859000**

# GRADUS

**Gradus Carpets Park Green Macclesfield Cheshire SK11 7LZ UK Tel: 01625 859000**

For enquiries outside the UK and Eire contact Gradus International on +44 (0)1625 613780

**www.gradus.com**